



SECURITY SYSTEMS | FABRICATION | INTEGRATION

**B&K**   
S E C U R I T Y

**CATALOGUE 2022**

**ACCESS CONTROL**

**FENCE SYSTEMS**

**ROAD BLOCKERS**

**SECURITY GATES**

**TYRE SPIKES AND ARM BARRIERS**

[www.amancofactory.com](http://www.amancofactory.com) | E-mail: [Info@amancofactory.com](mailto:Info@amancofactory.com); [factory@amancofactory.com](mailto:factory@amancofactory.com) | Tel: +966 11 4786401/ 4772606



## About us

Our company has over 20 years of experience in the production of security systems. We are one of the leading producers in the world in the field of manufacturing sliding and folding gates as well as road barriers.

We provide the highest quality gates, barriers and a whole range of products related to access control, in particular for facilities of strategic importance, such as military units, embassies, central banks, oil refineries and many others.

Providing systems for an individual investment project is also our specialty. We have the most experience in this in Poland, because we have completed hundreds of such projects around the world.

The products we make are hot-dip galvanized and powder painted in a professional paint shop. All this to maintain excellent quality for many years.

Each of our product design originated from the industry and the military use prototypes, where 24-hour continuous work and high quality is required. In result, our products ensure high work culture for every use even for in home solutions and for small businesses.



## Quality confirmed by reach ...

We are present all over the world. Our products have been repeatedly appreciated by the global industrial market, as well as for the individual investors.

We export our equipment to many countries, such as:

- England
- Algeria
- Saudi Arabia
- Denmark
- Egypt
- France
- Finland
- Greece
- Ireland
- Kuwait
- Macedonia
- Mexico
- Moldova
- Germany
- Nigeria
- Norway
- Portugal
- Singapore
- Scotland
- Italy



SECURITY



INDUSTRIAL QUALITY



COMPLETE EXECUTION





# SLIDING GATES





## CANTILEVERED SLIDING GATES

The most popular model among the entire family of sliding gates



### TECHNICAL DATA:

- The maximum entry width of the SLIDER L model is 9.0m (80x80x5 running rail)
- The maximum entry width of the SLIDER XL model is 20.0m (WELSER rail)
- Maximum gate height for both models is 3.0m (higher available on request)
- Standard infill - 25x25 closed profile

### EQUIPMENT:

- Drive unit - FAAC / BFT / BENNICA
- Main power 1x230VAC / 50Hz or 3x400V / 50Hz
- Key switch OPEN-STOP-CLOSE
- EMERGENCY STOP
- Photocells
- Safety edges set (SENTIR SAFETY EDGES)
- FAAC LIGHT or ROTO-LAMP beacon



## CANTILEVERED TELESCOPIC GATES

A functional solution that saves space



### TECHNICAL DATA:

- We avoid the obligation to maintain surface rails due to the self-supporting construction
- The maximum entry width is 10.0m (80x80x5 running rail + WELSER rail)
- The maximum height of the gates is 3.0m
- Standard infill - 25x25 closed profiles

### EQUIPMENT:

- Drive unit - FAAC / BFT / BENNICA
- Main power 1x230VAC / 50Hz or 3x400V / 50Hz
- Key switch OPEN-STOP-CLOSE
- EMERGENCY STOP
- Photocells
- Safety edges set (SENTIR SAFETY EDGES)
- FAAC LIGHT or ROTO-LAMP beacon





## TRACKED TELESCOPIC GATES

The perfect solution for 24/7 intensive operation



### TECHNICAL DATA:

- The maximum entry width is 25.0m (S10 track rail)
- The maximum height of the gates is 4.0m
- Standard infill - 25x25 closed profile

### EQUIPMENT:

- Drive unit - FAAC / BFT / BENNICA
- Main power 1x230VAC / 50Hz or 3x400V / 50Hz
- Key switch OPEN-STOP-CLOSE
- EMERGENCY STOP
- Photocells
- Safety edges set (SENTIR SAFETY EDGES)
- FAAC LIGHT or ROTO-LAMP beacon





## JETGATE – AIRPORT GATES

Uncompromising entry width up to 120m!



### TECHNICAL DATA:

- The maximum entry width is 120.0m (on 2xS10 rails)
- Standard infill - panel D656 (6mm double wire + 5mm single wire)

### EQUIPMENT:

- Drive unit - gear motor, power depends on the gate leaf dimensions
- Main power supply 3x400V / 50Hz - 60Hz
- Key switch OPEN-STOP-CLOSE
- EMERGENCY STOP
- Infrared barriers (long range photocells)
- Safety edges set (SENTIR SAFETY EDGES)
- Airport or individual warning lights
- Control panel



## CUSTOM SLIDING GATES

Uncompromising solutions for uncompromising



### TECHNICAL DATA:

- The maximum width of the entrance is set individually
- Maximum height of gates is set individually
- Infill to be determined by customer

### EQUIPMENT:

- Drive unit - engine with gear on request or serial drive
- Main power supply 24VDC / 1x115V / 1x230V / 3x400V
- Key switch OPEN-STOP-CLOSE
- EMERGENCY STOP
- Photocells
- Safety edges set (SENTIR SAFETY EDGES)
- Warning lights (any)
- Any type of control type (desktop, code lock, vehicle number scanner, etc.)





## SLIDING GATES GALLERY



Cantilevered gate 8.0m



Telescopic gate 36.0m



Safety Edges



Cantilevered gate 9.0m



Drive FAAC 844



Drives FAAC 844 1-PH



Warning lights



Arm-barrier FAAC + gate 6.0m



WELSER drive profile



Cantilevered gate 2x 16.0m



## SLIDING GATES GALLERY



Double entrance set



FAAC 844 drive



Cantilevered gate 14.0m



Cantilevered gate 4.0m



Cantilevered gate 9.0m



Drive in post



Cantilevered gate 7.0m



Cantilevered gate 15.0m



Telescope 36.0m



Cantilevered gate 14.5m



FAAC 844 3-ph



# BI-FOLDING and SWING GATES





## BI-FOLDING GATES

An effective solution for investors who value space and functionality



### TECHNICAL DATA:

- The maximum width of the entrance is 9.0m
- Maximum gate height - 4.0m
- Standard infill - 25x25 profile or be determined by customer

### EQUIPMENT:

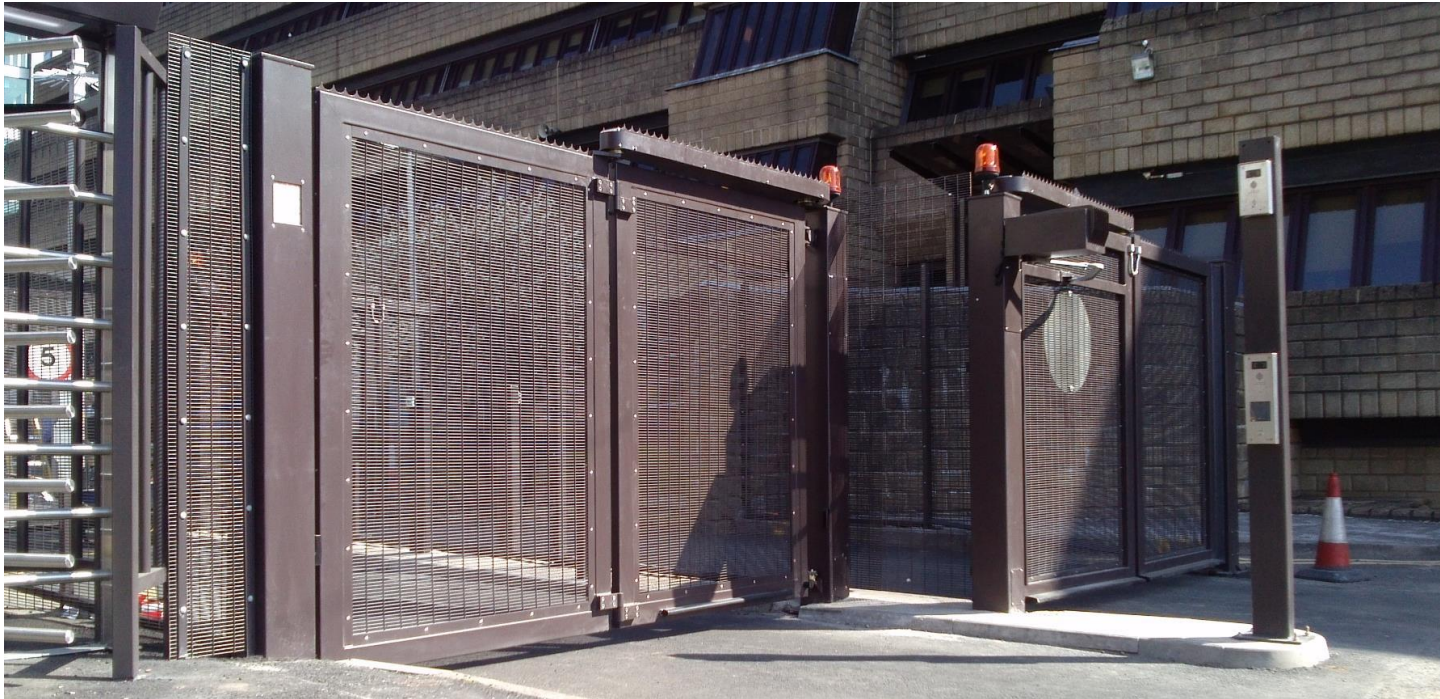
- Drive unit - ELKA ZENIT-S / FAAC 391
- Main power supply 230VAC / 50Hz
- Key switch OPEN-STOP-CLOSE
- EMERGENCY STOP
- Photocells
- Safety edges set (SENTIR SAFETY EDGES)
- Warning lights (any)
- Any type of control type (desktop, code lock, vehicle number scanner, etc.)





## BIFOLDING SPEED GATES

An effective solution for investors who value space and functionality



### TECHNICAL DATA:

- The maximum width of the entrance - 8.0m
- Maximum gate height - 3.5m
- Standard infill - 25x25 profile or be determined by customer

### EQUIPMENT:

- Drive unit - RAPTOR PLC DRIVE
- Main supply 1x230VAC or 3x400VAC
- Key switch OPEN-STOP-CLOSE
- EMERGENCY STOP
- Photocells
- Safety edges set (SENTIR SAFETY EDGES)
- Warning lights (any)
- Any type of control type (desktop, code lock, vehicle number scanner, etc.)



## CLASSIC SWING GATES

Quality and classic at its best



### TECHNICAL DATA:

- The maximum width of the entrance - 10.0m
- Maximum gate height - 4.0m
- Standard infill - 25x25 profile or be determined by customer

### EQUIPMENT:

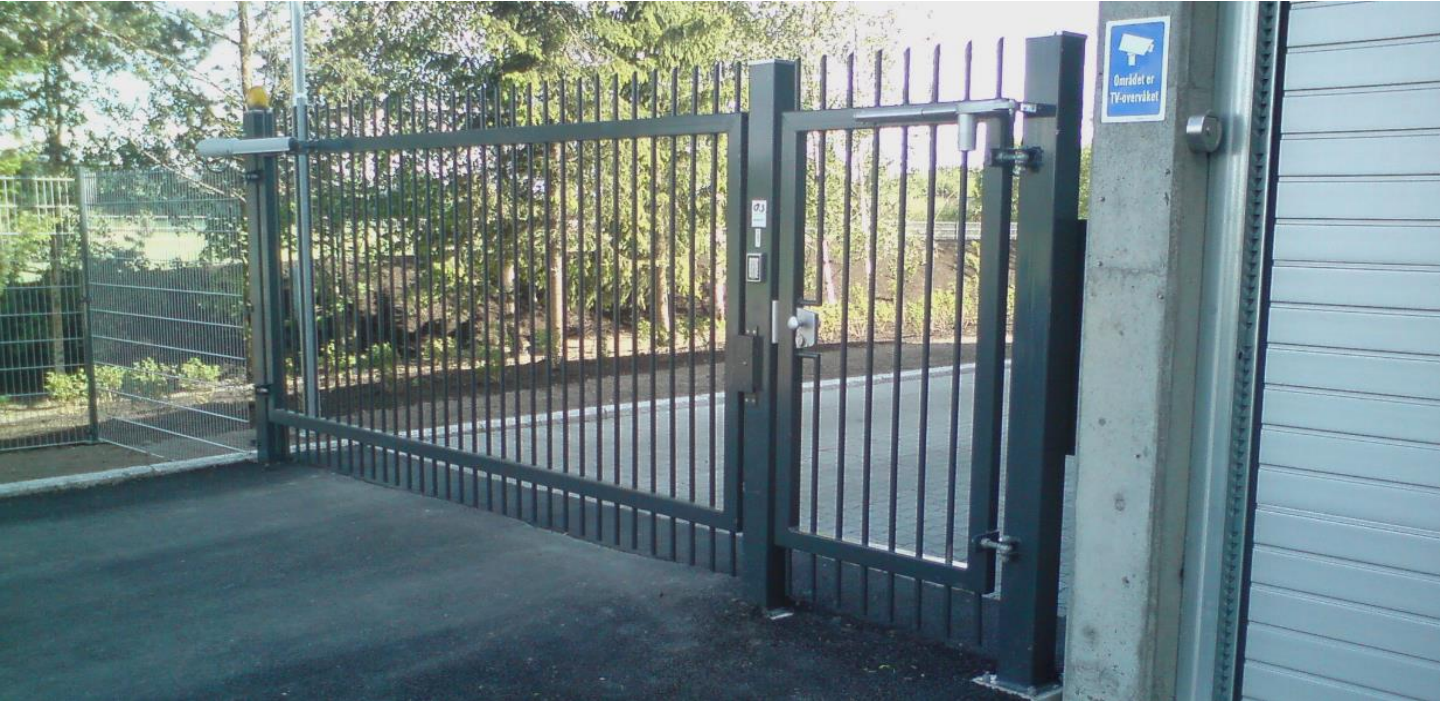
- Drive unit - FAAC / BFT / BENNINGA
- Main supply 1x230VAC or 3x400VAC
- Key switch OPEN-STOP-CLOSE
- EMERGENCY STOP
- Photocells
- Safety edges set (SENTIR SAFETY EDGES)
- Warning lighting (any)
- Any type of control type (desktop, code lock, vehicle number scanner, etc.)





## PEDESTRIAN GATES / WICKETS

Quality and safety available to everyone!



### TECHNICAL DATA:

- The maximum width of the entrance - 2.0m
- Maximum gate height - 4.0m
- Standard infill - 25x25 profile or any to be determined by customer

### EQUIPMENT:

- Door handle + lock
- Ears to padlock
- Additional horizontal or vertical drop bolt
- Door closer
- Electro-hook
- Magnetic lock (SHEARLOCK)
- Additional gap curtains (army, airports, highly guarded facilities)





## BI-FOLDING GATE GALLERY



Bi-Folding gate 5.0m



Bi-Folding gate 10.0m



Traffic light LED red/green



Bi-folding gate 3.0m

GALLERY



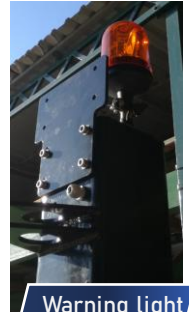
Bi-Folding gate 8.0m



Bi-Folding gate 8.0m



Bi-Folding gate 7.0m



Warning light



Bi-Folding gate 7.5m



Transmission system





## SWING GATE GALLERY



Stadium swing gates



Swing gate 4.0m



Stadium wickets



Swing gate 7.0m



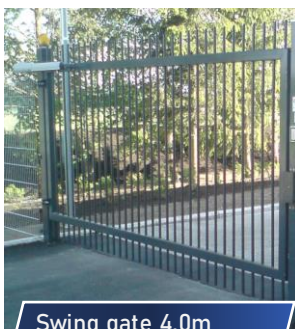
Swing gate 6.0m



Swing gate 6.0m



Stadium swing gate 8.0m



Swing gate 4.0m



Swing gate 8.0m

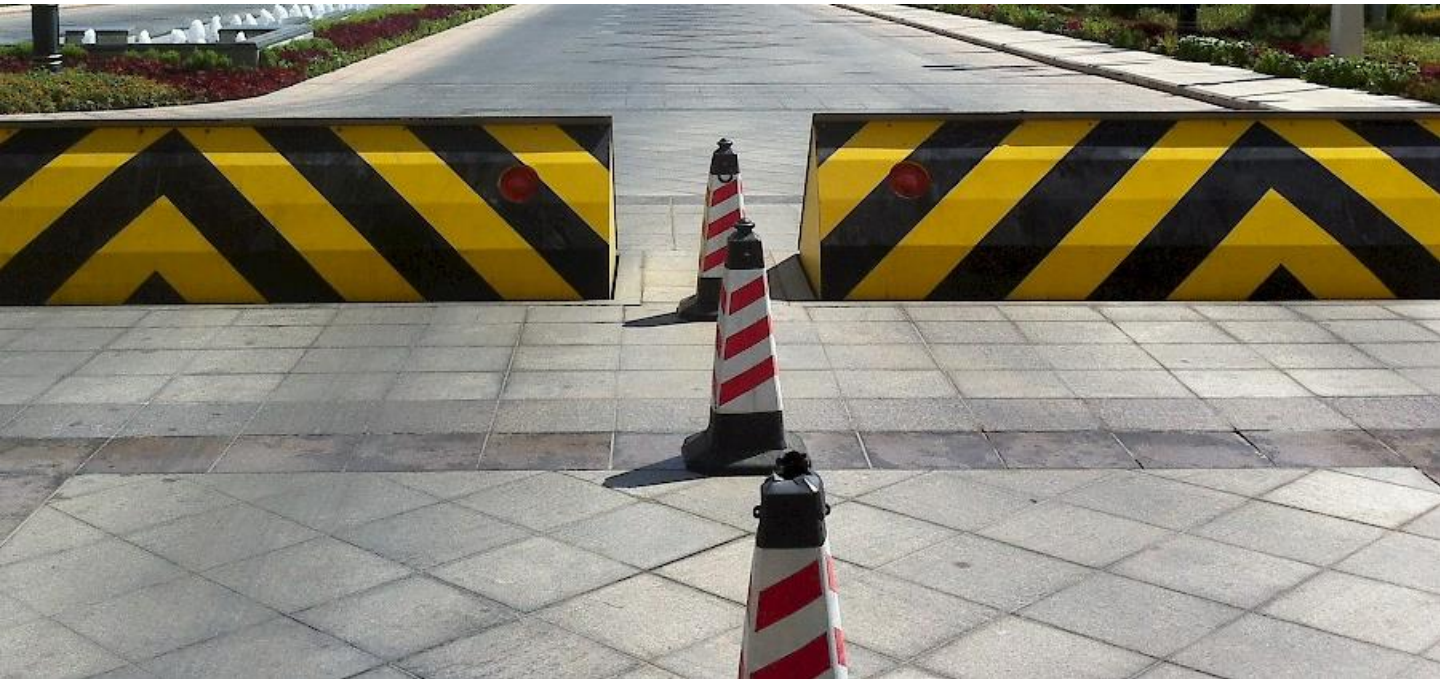
# ROAD BLOCKERS





## ROAD BLOCKER TITAN

UNCOMPROMISE SAFETY



### TECHNICAL DATA:

- Maximum entry width for a single blocker - 6.0m (standard is 3.0m)
- Blocking height from 650mm to 1200mm (standard is 665mm)
- Protection at K4 / K8 / K12 level. Optional K30 (military applications)
- Standard lifting / lowering time 4-6s (special version 1.5s)
- Hot-dip galvanized construction, Front plate additionally powder coated.
- Hydraulic control cabinet with separated PLC case.

### EQUIPMENT:

- Guard control panel
- Manual hydraulic pump
- LED warning light
- Possibility of integration with any object management system
- Possibility of any control (remote control, desktop, license plates, RFID card)



## ROAD BLOCKER SHIELD

UNCOMPROMISE SAFETY



### TECHNICAL DATA:

- Maximum entry width for a single blocker - 6.0m (standard is 3.0m)
- Blocking height from 650mm to 1200mm (standard is 665mm)
- Protection at K4 / K8 / K12 level. Optional K30 (military applications)
- Standard lifting / lowering time 4-6s (special version 1.5s)
- Hot-dip galvanized construction, Front plate additionally powder coated.
- Hydraulic control cabinet with separated PLC case.
- Shallow underground installation

### EQUIPMENT:

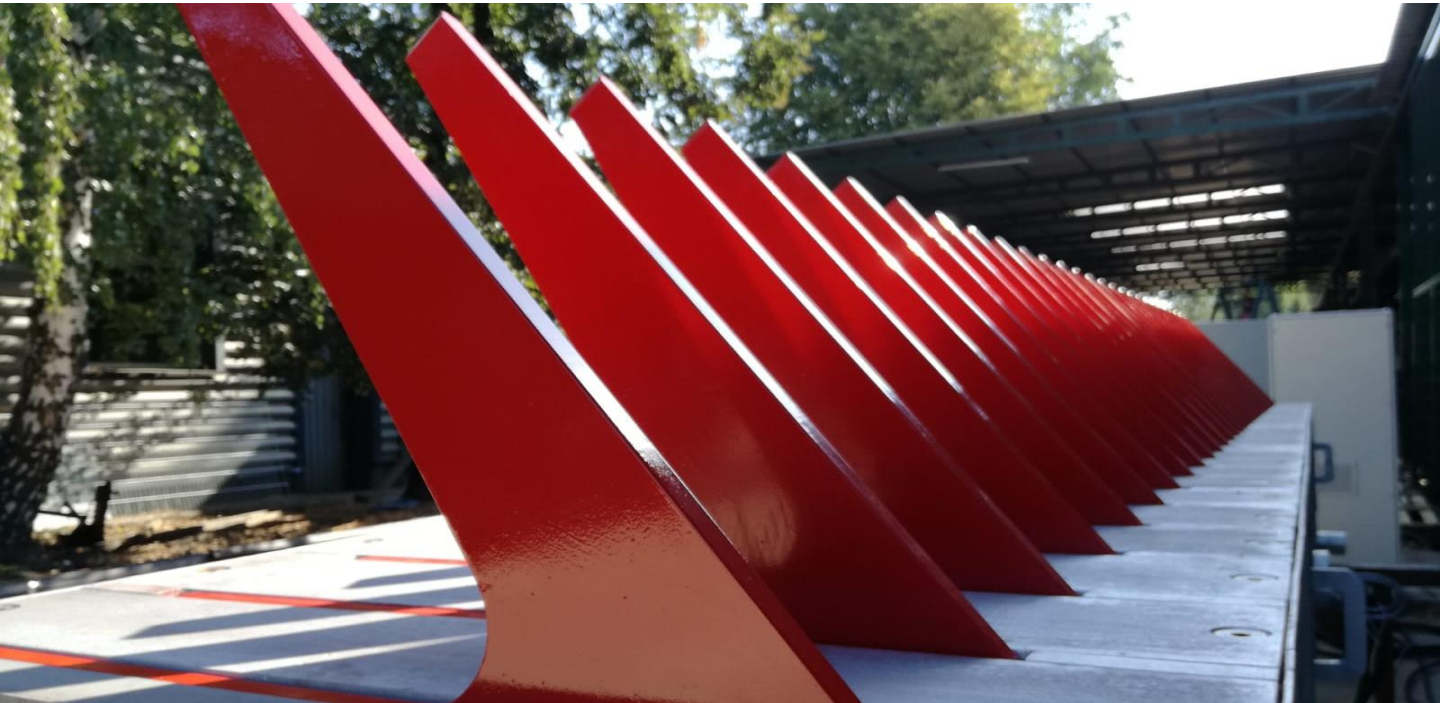
- Guard control panel
- Manual hydraulic pump
- LED warning lights
- Possibility of integration with any object management system
- Possibility of any control (remote control, desktop, license plates, RFID card)





## TYRE KILLER DEFENDER

UNCOMPROMISE SAFETY



## TECHNICAL DATA:

- Maximum entry width for a single blocker - 6.0m (standard is 3.0m)
- Degree of protection calculated at level K4
- Standard lifting / lowering time 4-6s (special version 1.5s)
- Hot-dip galvanized construction, powder coated teeth
- Hydraulic control cabinet with separated PLC case.
- Tooth thickness 20mm / 25mm (depending on version)

## EQUIPMENT:

- Guard control panel
- Manual hydraulic pump
- Possibility of integration with any object management system
- Possibility of any control (remote control, desktop, license plates, RFID card)





## ROAD BLOCKER MONOBLOCK

PERFECT SPACING



### TECHNICAL DATA:

- The width of a single block is 400mm
- Blocking height 600mm
- Degree of protection calculated at K4
- Lifting / lowering time from 1.5s to 4.0s
- Hot-dip galvanized construction, additional powder coated cover
- Hydraulic control cabinet with separated PLC case.
- It is possible to install from 1 to 4 blockades from one hydraulic cabinet

### EQUIPMENT:

- Guard control panel
- Manual hydraulic pump
- LED warning lamps
- Possibility of integration with any object management system
- Possibility of any control (remote control, desktop, license plates, RFID card)





## ROAD BLOCKERS GALLERY



Road Blocker TITAN 3.0m



Road Blocker TITAN 3.5m



Road Blocker TITAN 3.0m



Road Blocker TITAN 6.0m



Road Blocker TITAN 6.0m



Road Blocker TITAN 3.0m



Road Blocker TITAN 3.0m



Road Blocker TITAN 4.0m



Road Blocker TITAN 6.5m



## ROAD BLOCKERS GALLERY



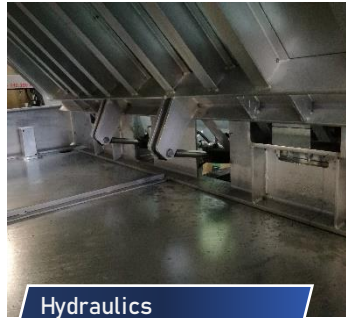
Military wedge barrier 4.0m K30



Loading



Wedge barrier SHIELD 3.0m K12



Hydraulics



Wedge barrier SHIELD 4.5m K4



Wedge barrier SHIELD 3.0m K30



Wedge barrier SHIELD 3.0m K12



Wedge barrier 2.5m K30



Military wedge barriers

3.0m K12





## ROAD BLOCKERS GALLERY



Military wedge barrier 4.0m K30



Wedge barrier SHIELD 3.0m K12



Wedge barrier SHIELD 4.5m K4



Military wedge barrier K30



Wedge barrier SHIELD 3.0m K12



Military wedge barrier 3.0m K12



The Factory Acceptance Test



Wedge barrier SHIELD 2.6 K12





## ROAD BLOCKERS GALLERY



Tyre Killer DEFENDER 3.6m K4



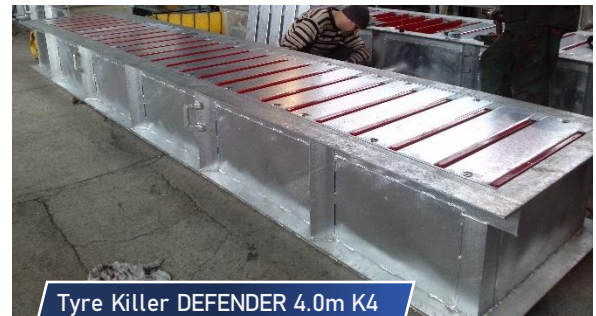
Tyre Killer DEFENDER 3.0m K4



Tyre Killer DEFENDER 6.4m K4



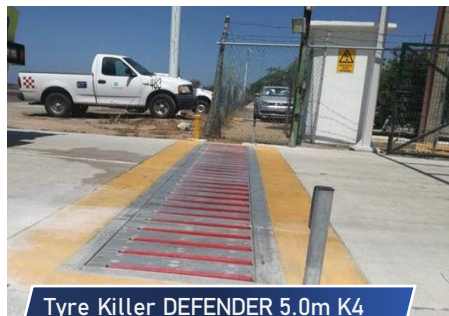
Tyre Killer DEFENDER 6.0m K4



Tyre Killer DEFENDER 4.0m K4



Tyre Killer DEFENDER 2.6m K4



Tyre Killer DEFENDER 5.0m K4



C5 surface treatment



DEFENDER 3.6m K4 on truck



Tyre Killer DEFENDER 6.4m K4





## ROAD BLOCKERS GALLERY



Teeth production for DEFENDER



Tyre Killer DEFENDER 3.6m K4



Tyre Killer DEFENDER 6.4m



Road Blocker MONOBLOCK K4



Road Blocker MONOBLOCK K4 integrated system



MONOBLOCK K4



Road Blocker MONOBLOCK K4



The Factory Acceptance Test



The Factory Acceptance Test



Road Blocker MONOBLOCK K4



Road Blocker MONOBLOCK K8





# STANDARD AND ANTI-RAM ARM BARRIERS



## ARM BARRIER FAAC 620

HYDRAULIC RELIABILITY AND PERFECT ECONOMICS



### TECHNICAL DATA:

- Maximum entry width for a single barrier - 5.0m (standard 4.0m)
- Barrier arm length from 1.0 m to 5.0 m (depending on the shape of the arm)
- Hydraulic drive with the possibility of locking in the open and closed position
- Opening times from 3.5 s to 4.5 s; for Rapid version from 2 s to 3 s (broken arm)
- Recommended for places with high traffic but not continuous
- Automatic, semi-automatic, parking, residential or home applications
- Triangle key unlocking, BUS technology and two-channel loop detector

### EQUIPMENT:

- Control panel
- Barrier body for rectangular, oval or swinging arms
- Hydraulic drive with spring
- Mounting accessories
- Triangular key





## ARM BARRIER FAAC 640

IDEAL SOLUTION FOR THE ESTATE AND INDUSTRY



### TECHNICAL DATA:

- Maximum entry width for a single barrier - 7.0m (standard 4.0 m)
- Barrier arm length from 4.0m to 7.0m
- Hydraulic drive with the possibility of locking in the open and closed position
- Opening time 4.0 s for a 5.0m standard arm (arm deceleration)
- The possibility to transfer the status of the barrier to traffic management devices
- Intended for industrial applications, heavy traffic entrances
- External lock with key, BUS technology and built-in two-channel detector

### EQUIPMENT:

- Control panel
- Barrier post case
- Hydraulic drive with spring
- Mounting accessories
- Triangular release key



## ARM BARRIER FAAC B680H

UNCOMPROMISING SOLUTION



### TECHNICAL DATA:

- Arm length from 2.3 m to 8.3 m
- Removable housing in red (blue, white, gray, stainless steel)
- Hybrid technology: hydraulics and brushless motor (BLDC)
- Opening time 1.5 s (2,000 mm arm) to 6,0 s (8,000 mm arm) electronically selected
- "Eternal" spring - 2 million cycles of continuous operation without special maintenance
- Easily programmable with an advanced control panel
- Integrated LED lighting, built-in two loop sensors and Master / Slave logic

### EQUIPMENT:

- Barrier with control panel and encoder
- Hydraulic drive
- Mounting accessories
- Triangular unlocking key





## ANTI-RAM ARM BARRIER DUAL HSAB

UNCOMPROMISING SECURITY



### TECHNICAL DATA:

- Maximum entry width - 7.0m (standard 3.0m)
- Degree of protection K4 / K8 / K12
- Standard lifting / lowering time 12s / 12s
- Hot-dip galvanized construction, powder coated arm
- Reflective red stripes
- Separated or integrated hydraulic control cabinet with electronics
- Single or double arm

### EQUIPMENT:

- Guard control panel
- Manual hydraulic pump
- Possibility of integration with any object management system
- Possibility of any control (remote control, desktop, license plates, RFID card)



## ARM-BARRIERS GALLERY



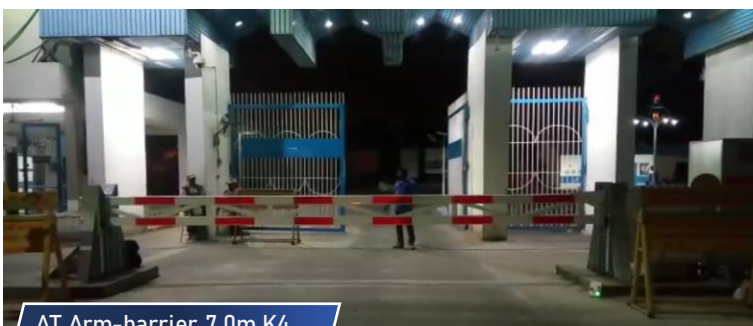
AT Arm-barrier 7.0m K12



AT Arm-barrier 6.0m K4



AT Arm-barrier 6.0m K4



AT Arm-barrier 7.0m K4



AT Arm-barrier 5.0m K4



AT Arm-barrier 6.0m K4



Hydraulic piston



Drive unit



PLC cabinet



AT Arm-barrier 6.0m K4



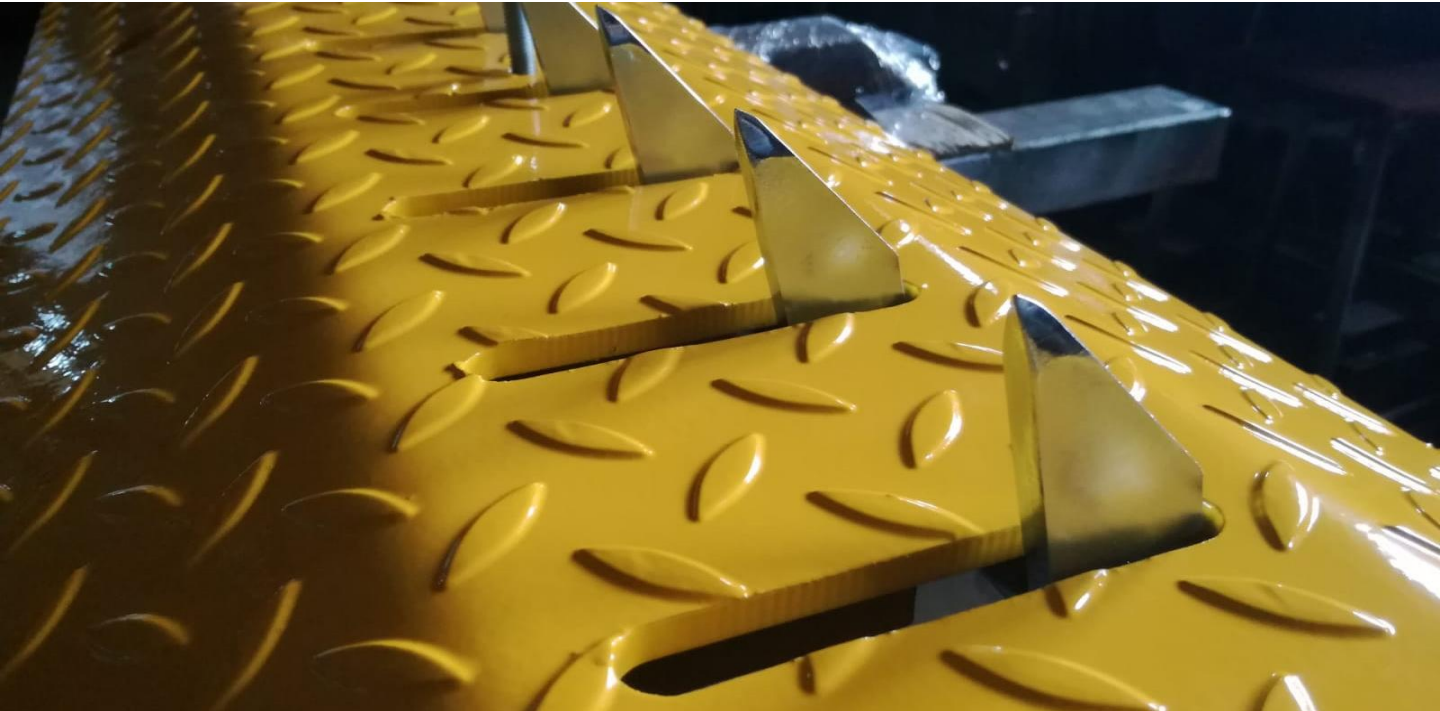


# TYRE SPIKES



## TYRE SPIKES TRAPEZOIDAL SPIKES

ECONOMIC AND EASY TO INSTALL



### TECHNICAL DATA:

- Flat tooth, sharpened, profiled
- Blocking width from 1.0m to 8.0m (modular construction every 1.0m possible)
- Tooth height after opening = 55mm
- Height of hump = 55mm
- Body width = 400mm
- Hot-dip galvanized construction and optionally powder coated
- Gravity work or with automatic barrier
- Easy and quick surface installation
- Main shaft with ball bearings
- Load capacity = 7.5 tonnes per axle

### EQUIPMENT:

- Locking screws in the lower position (only for gravity spikes)
- Springs for regulating lifting / rebound force

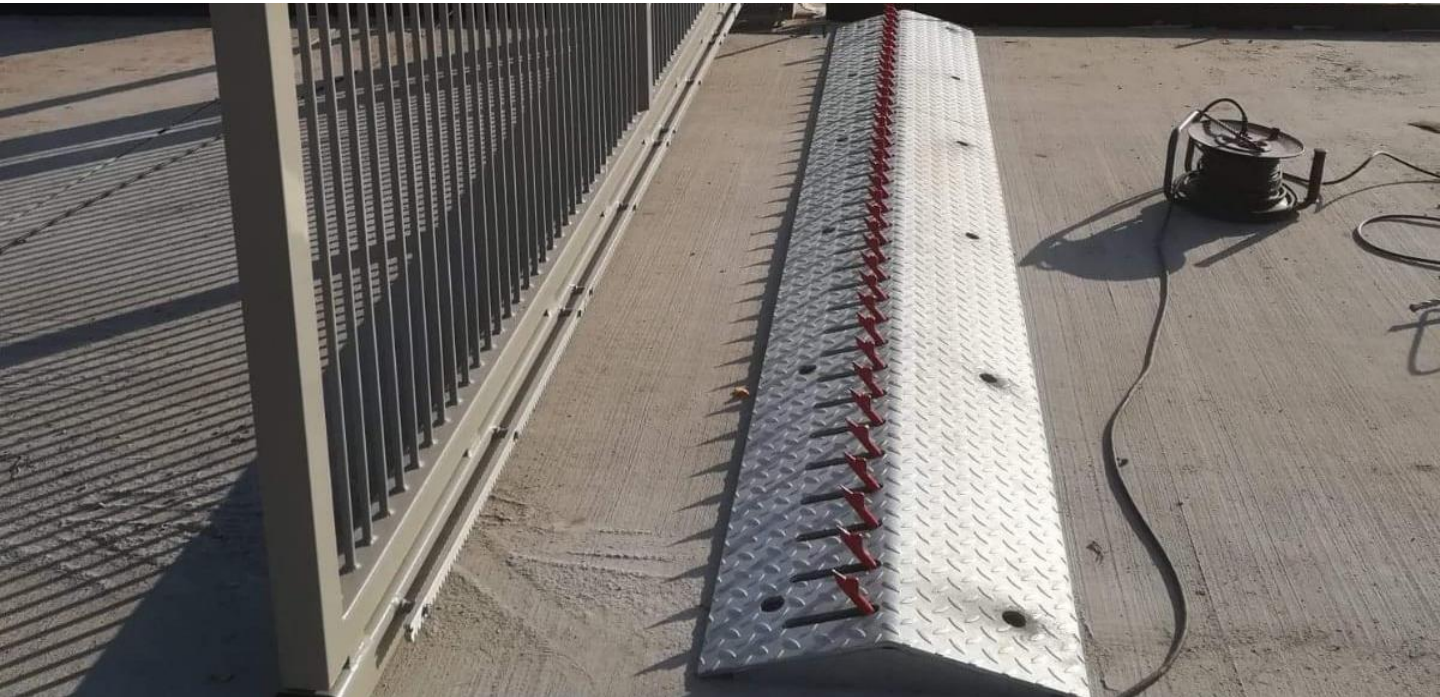
[www.amancofactory.com](http://www.amancofactory.com) | E-mail: [Info@amancofactory.com](mailto:Info@amancofactory.com); [factory@amancofactory.com](mailto:factory@amancofactory.com) | Tel: +966 11 4786401/ 4772606





## TYRE SPIKES TRIANGLE SPIKES

IDEAL FOR HEAVY USE



### TECHNICAL DATA:

- Round, sharpened tooth with a diameter of 14mm
- Blocking width from 1.0m to 8.0m (modular construction every 1.0m possible)
- Tooth height after opening = 80mm
- Hump height = 80mm
- Body width = 500mm
- Hot-dip galvanized construction and optionally powder coated
- Gravity work or with automatic barrier
- Easy and quick surface installation
- Main shaft with ball bearings
- Load capacity = 11.5 tonnes per axle

### EQUIPMENT:

- Locking screws in the lower position (only for gravity spikes)
- Springs for regulating lifting / rebound force



## TYRE SPIKES UNDERGROUND SPIKES

BORDER CROSSINGS AND SPECIAL UNITS



### TECHNICAL DATA:

- Round, sharpened tooth with a diameter of 16mm
- Blocking width from 1.0m to 8.0m (modular construction every 1.0m possible)
- Tooth height after opening = 100mm
- Body width = 350mm
- Hot-dip galvanized construction and optionally powder coated
- Gravity work or with automatic barrier
- Underground assembly
- Main shaft with ball bearings
- Load capacity max. 30 tons per axle

### EQUIPMENT:

- Locking screws in the lower position (only for gravity spikes)
- Springs for regulating lifting / rebound force





## TYRE SPIKES GALLERY



TYRE SPIKES UNDERGROUND



TYRE SPIKES TRAPEZOIDAL SPIKES



TYRE SPIKES TRAPEZOIDAL SPIKES



TYRE SPIKES UNDERGROUND



TYRE SPIKES TRAPEZOIDAL SPIKES



TYRE SPIKES UNDERGROUND SPIKES





## TYRE SPIKES GALLERY



TYRE SPIKES TRAPEZOIDAL SPIKES



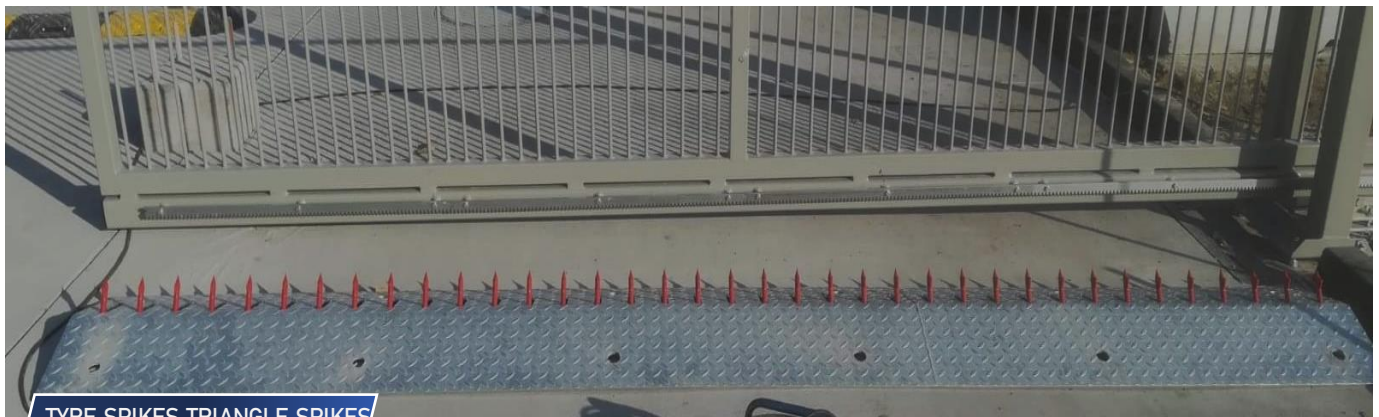
TYRE SPIKES UNDERGROUND SPIKES



TYRE SPIKES UNDERGROUND SPIKES



TYRE SPIKES TRAPEZOIDAL SPIKES



TYRE SPIKES TRIANGLE SPIKES





## FENCES



## PANEL FENCES FOR HOME USE

QUALITY AND SAFETY



### TECHNICAL DATA:

- The width of the panels is optional
- Custom height on request
- Galvanized and painted in standard RAL colors
- System assembly depending on type
- Posts to be concreted (optional on mounting foot)
- Optional with foundation
- Easy to assemble





## PANEL FENCES FOR INDUSTRIAL USE

QUALITY AND SAFETY



### TECHNICAL DATA:

- The width of the panels is optional
- Custom height on request
- Galvanized and painted in standard RAL colors
- System assembly depending on type
- Posts to be concreted (optional on mounting foot)
- Optional with foundation
- Easy to assemble





## PANEL FENCES D656 AND D868

QUALITY AND SAFETY



### TECHNICAL DATA:

- Panels width 2.5m
- Heights from 830mm to 2030mm (optional height 2430mm for D868)
- Galvanized and painted in standard RAL colors
- Mounting of clamps
- Posts to be poured in concrete (optional on mounting foot)
- Optional with foundation
- Easy to assemble





## STADIES AND SPORTS PLAYS

UNCOMPROMISE SAFETY



## TECHNICAL DATA:

- Panels width 2.5m
- Height from 2000mm to 6000mm (combined panels)
- Galvanized and painted in standard RAL colors
- Mounting of clamps or hook bolts (strength)
- Posts to be poured in concrete (optional on mounting foot)
- Strong posts with thick walls.
- Easy to assemble





## MILITARY AND SPECIAL USE FENCES

UNCOMPROMISE SAFETY



### TECHNICAL DATA:

- Top-class military fences
- Any execution in accordance with military standards
- Individual height on request
- Galvanized and painted in standard RAL colors
- System assembly depending on type
- Posts to be concreted (optional on mounting feet)
- Optional with foundation
- Easy to assemble





## GALLERY



HEAVY FENCE D868



INDUSTRIAL PALISADE



PRISON FENCE





## GALLERY



TRAFOSTATION FENCE



PRISON FENCE



PRISON FENCE



STADIUM FENCE



STADIUM FENCE

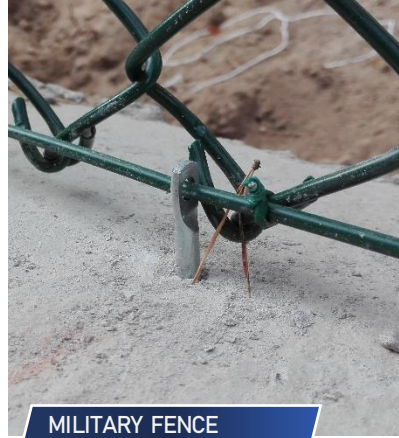




## GALLERY



MILITARY FENCE



MILITARY FENCE



BARB WIRE MILITARY EXTENSION



TRAFOSTATION FENCE



AIR PORT FENCE





## GALLERY



STADIUM FENCE



HOUSE FENCE



HOUSE FENCE



BALUSTRADE FENCE



HOUSE FENCE







METALLURGY | INDUSTRY | CONSTRUCTIONS | SECURITY

B&K   
S E C U R I T Y

[www.amancofactory.com](http://www.amancofactory.com) | E-mail: [Info@amancofactory.com](mailto:Info@amancofactory.com); [factory@amancofactory.com](mailto:factory@amancofactory.com) | Tel: +966 11 4786401/ 4772606

